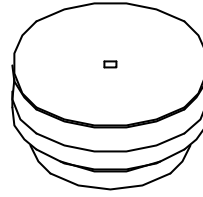
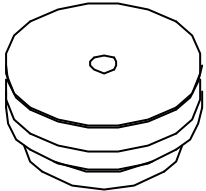




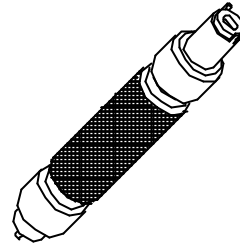
1020179382
REFLEX PLATE A
(DIA. = ø1.2)
PAN, MV



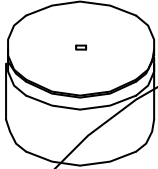
1020179383
REFLEX PLATE B
(DIA. = ø1.6)
PAN, MV



1020106020
REFLEX PLATE C
(DIA. = ø3.0)
PAN, MV



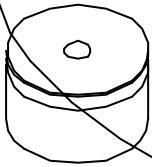
NOZZLE JIG
(MOUNT/DISMOUNT)
PAN, MV/MV2



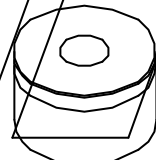
102246500201
REFLECTING BOARD (MELF)
(DIA = ø1.2)
PAN, MV2



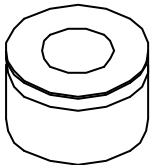
SAME AS
102241013202
1022410132
REFLECTING BOARD #2
(DIA. = ø1.6)
PAN, MV2



1022410133
REFLECTING BOARD #3
(DIA. = ø3.0)
PAN, MV2



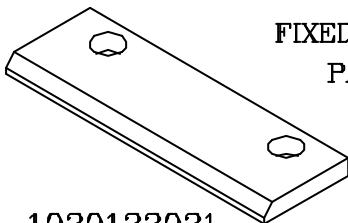
SAME AS
102241013402
1022410134
REFLECTING BOARD #4
(DIA. = ø5.5)
PAN, MV2



SAME AS
102241013502
1022410135
REFLECTING BOARD #5
(DIA. = ø8.0)
PAN, MV2

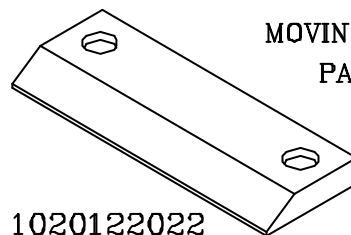


102247948601
REFLECTING BOARD
(DIA. = ø5.5)
PAN, MV2



1020122021

FIXED CUTTER
PAN, MV



1020122022

MOVING CUTTER
PAN, MV